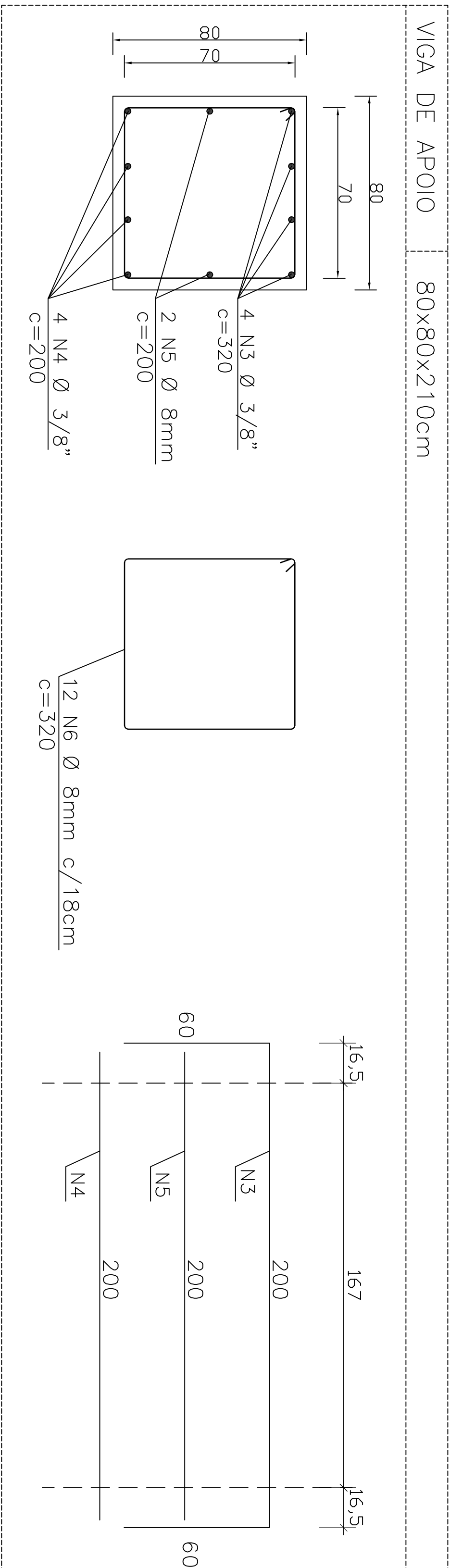


FUNDAÇÕES - PASSARELA 3A							CONCRETO FCK 25 MPa
AÇO CA-50							
ESPEC.	NUM.	DIAM.	QUANT.	C. UNIT.	C. TOTAL	PESO	PESO
				(cm)	(cm)	(Kg/m)	(Kg)
TUBULÃO	N1	1/2"	16	460	7360	1,00	73,60
	N2	8mm	25	540	13500	0,40	54,00
VIGA	N3	3/8"	4	320	1280	0,56	7,17
	N4	3/8"	4	200	800	0,56	4,48
	N5	8mm	2	200	400	0,40	1,60
	N6	8mm	12	320	3840	0,40	15,36
SUBTOTAL						156,21	4,11
TOTAL x2						312,42	8,22

[illegible]